

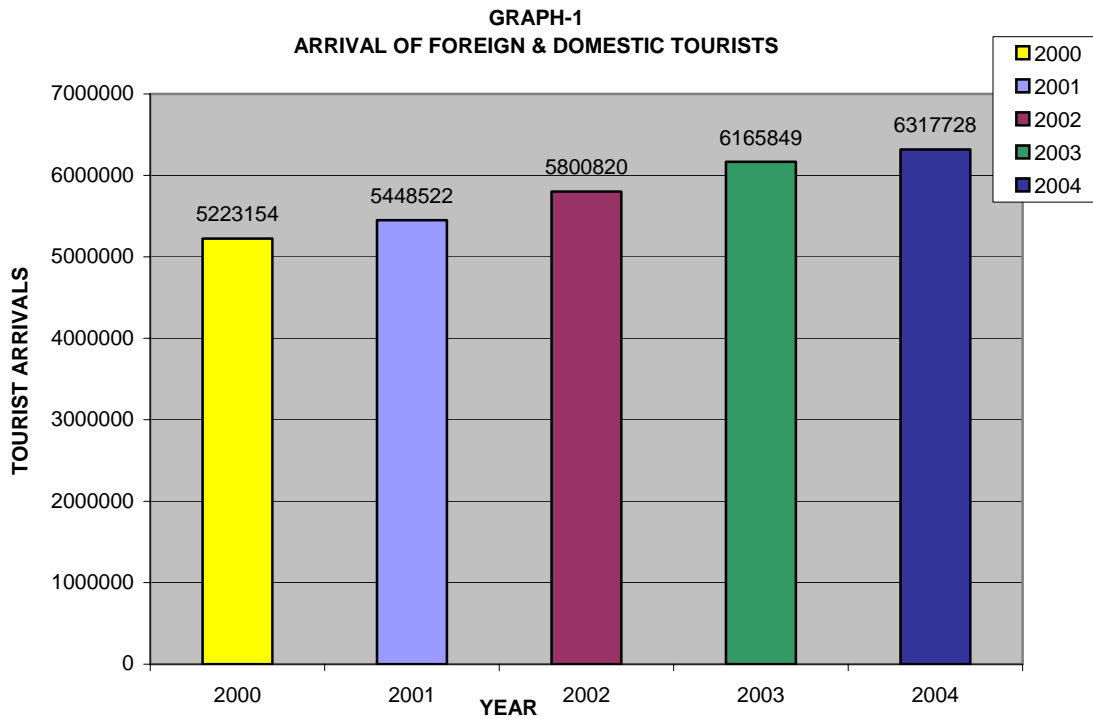
TOURIST STATISTICS – 2004

Total Tourist Arrivals

Tourist traffic to Kerala shows an increasing trend over the past few years. It is estimated that the total tourist inflow to Kerala is 6317728 during 2004, showing an increase of 2.46% over the previous year. The following Table -1 gives the total number of tourists visited Kerala during the past five years.

TABLE No.1					
DETAILS OF TOURIST ARRIVALS 2000 - 2004					
Tourist Arrival	2000	2001	2002	2003	2004
Tourists (Foreign & Domestic)	5223154	5448522	5800820	6165849	6317728
Percentage of variation over previous year.	2.61	4.31	6.47	6.29	2.46

Graph-1 shows the growth of tourists to Kerala State from 2000 to 2004

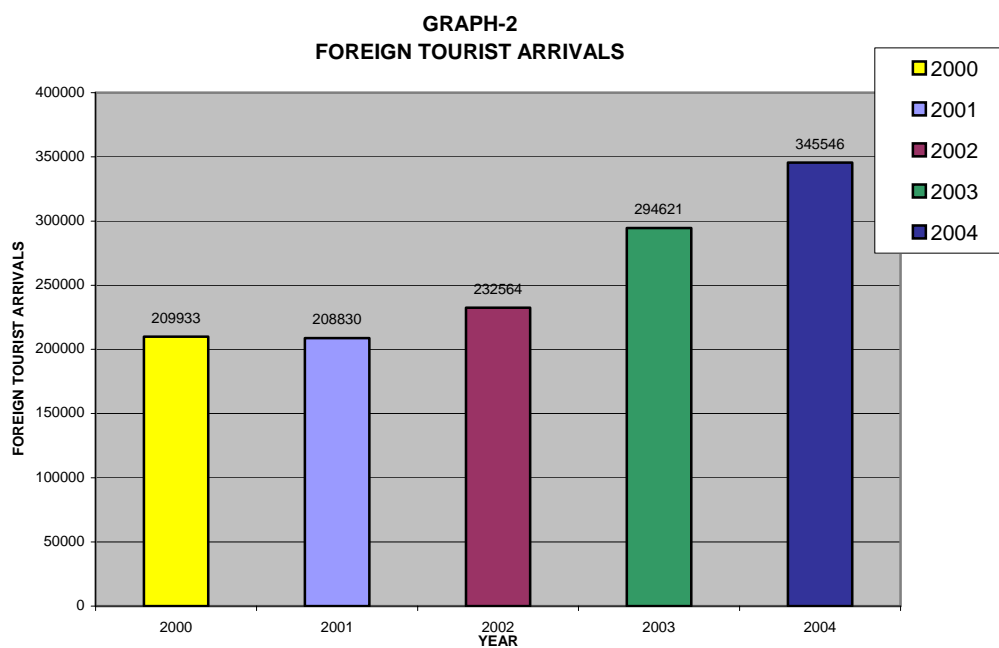


Foreign Tourists

Foreign tourist arrival during 2004 is estimated as 345546 showing an increase of 17.28% over the previous year. Table-2 given below indicates the arrival of foreign tourists to Kerala during the last five years and percentage of variation over the previous years.

TABLE No.2					
DETAILS OF FOREIGN TOURIST ARRIVALS 2000-2004					
Tourist Arrival	2000	2001	2002	2003	2004
Tourists	209933	208830	232564	294621	345546
Percentage of variation over previous year.	3.80	-0.53	11.37	26.68	17.28

Graph-2 shows the growth of foreign tourist arrivals from 2000 to 2004



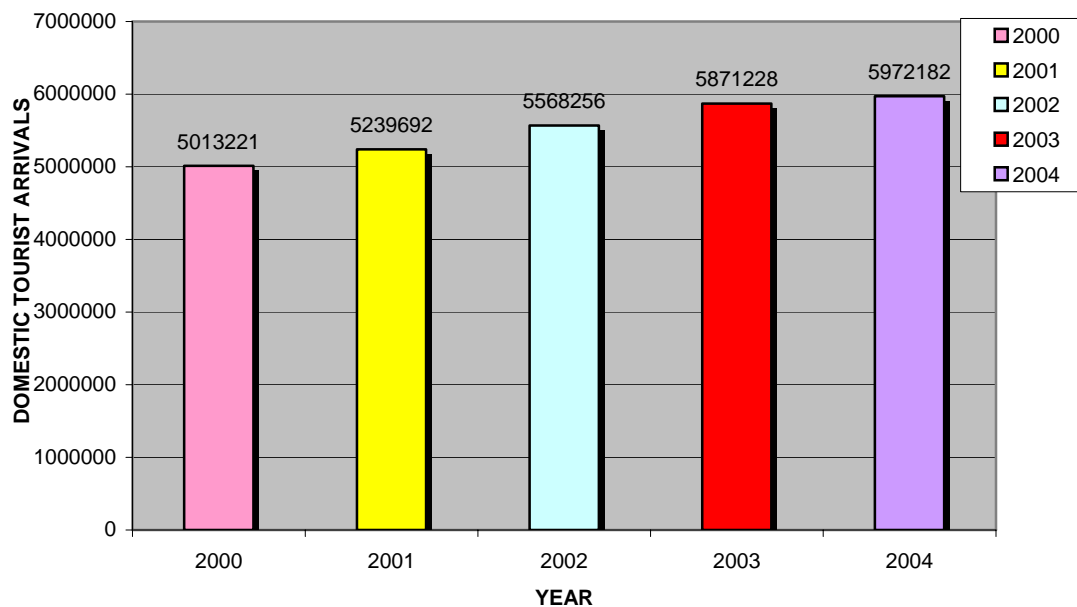
Domestic Tourists

Domestic tourist arrival during 2004 is estimated to be 5972182 as against 5871228 in 2003, showing an increase of 1.72%. Table-3 indicates the number of domestic tourists who visited Kerala during the last five years and percentage of variation over the previous years.

TABLE No.3					
DETAILS OF DOMESTIC TOURIST ARRIVALS 2000-2004					
Tourist Arrival	2000	2001	2002	2003	2004
Number of domestic tourists	5013221	5239692	5568256	5871228	5972182
Percentage of variation over previous year.	2.55	4.52	6.27	5.44	1.72

Graph-3 shows the growth of domestic tourists from 2000 to 2004

GRAPH-3
DOMESTIC TOURIST ARRIVALS



Time of Visit

In 2004, maximum number of foreign tourists arrived during the 1st quarter constituting 35.9% with 124054 tourists followed by 4th quarter constituting 30.29% with 104670 tourists followed by 3rd quarter constituting 19% with 65672 tourists followed by 2nd quarter constituting 14.8% with 51150 tourists.

In 2004, the maximum number of domestic tourists arrived during the 4th quarter constituting 27.02% with 1613862 tourists followed by 2nd quarter constituting 25.20% with 1505555 tourists followed by 3rd quarter constituting 24.37% with 1455473 tourists followed by 1st quarter constituting 23.39% with 1397292 tourists.

Quarterly breakup of the last three years figures is given in the following table.

TABLE No. - 4			
QUARTERLY COMPARISON - 2002, 2003 & 2004			
NUMBER OF TOURISTS			
Foreign	2002	2003	2004
I - Quarter	77,791	1,03,269	1,24,054
II - Quarter	35,432	43,601	51,150
III - Quarter	40,615	54,317	65,672
IV - Quarter	78,726	93,434	1,04,670
Total	2,32,564	2,94,621	3,45,546
Domestic			
I - Quarter	12,41,610	1,339,015	13,97,292
II - Quarter	14,43,146	1,531,353	15,05,555
III - Quarter	13,61,600	1,388,243	14,55,473
IV - Quarter	15,21,900	1,612,617	16,13,862
Total	55,68,256	58,71,228	59,72,182

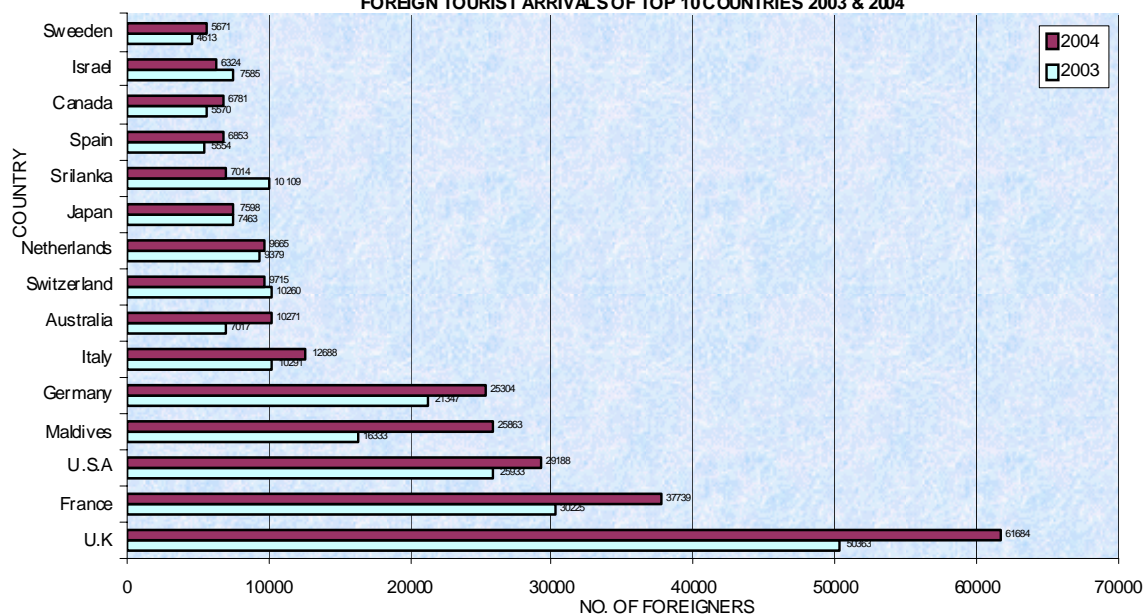
Market Performance of Top Fifteen Countries

Table –5 shows the market performance of top fifteen countries. United Kingdom with an estimated arrival figure of 61684 remained on the top of all tourist-generating countries for Kerala and accounted for 17.85% of the total traffic as against the arrival figure of 50363 in 2003. Pictorial representation of the same is made in Graph-4.

TABLE No. 5
MARKET PERFORMANCE OF TOP FIFTEEN COUNTRIES 2003 & 2004

Country	No.of Tourists 2003	Proportion to total	No.of Tourists 2004	Proportion to total
U.K	50363	17.09	61684	17.85
France	30225	10.26	37739	10.92
U.S.A	25933	8.80	29188	8.45
Maldives	16333	5.54	25863	7.48
Germany	21347	7.25	25304	7.32
Italy	10291	3.49	12688	3.67
Australia	7017	2.38	10271	2.97
Switzerland	10260	3.48	9715	2.81
Netherlands	9379	3.18	9665	2.80
Japan	7463	2.53	7598	2.20
Srilanka	10109	3.43	7014	2.03
Spain	5554	1.89	6853	1.98
Canada	5570	1.89	6781	1.96
Israel	7585	2.57	6324	1.83
Sweden	4613	1.57	5671	1.64
Total	222042	75.37	262358	75.93
Others	72579	24.63	83188	24.07
Grand Total	294621	100.00	345546	100.00

GRAPH-4
FOREIGN TOURIST ARRIVALS OF TOP 10 COUNTRIES 2003 & 2004



Month-wise Details of Foreign Tourists

Table No.6 shows month-wise comparison of foreign tourist arrivals in 2003 & 2004. It is seen that in 2003 and 2004 the month of January marked the highest and June marked the lowest tourist inflow. The trends are depicted in Graph – 5.

TABLE No. 6				
MONTHWISE ARRIVAL DETAILS OF FOREIGN TOURISTS				
Sl. No.	Month	2003	2004	% of Variation over the year 2003
1	January	41845	45630	1.28
2	February	36163	43418	2.46
3	March	25261	35006	3.31
4	April	20106	23546	1.17
5	May	12675	14870	0.75
6	June	10820	12734	0.65
7	July	14824	17228	0.82
8	August	19240	27341	2.75
9	September	20253	21103	0.29
10	October	24702	22160	-0.86
11	November	32165	38118	2.02
12	December	36567	44392	2.66
	Total	294621	345546	17.28

GRAPH -5
MONTHWISE COMPARISON OF FOREIGN TOURISTS - 2003 & 2004

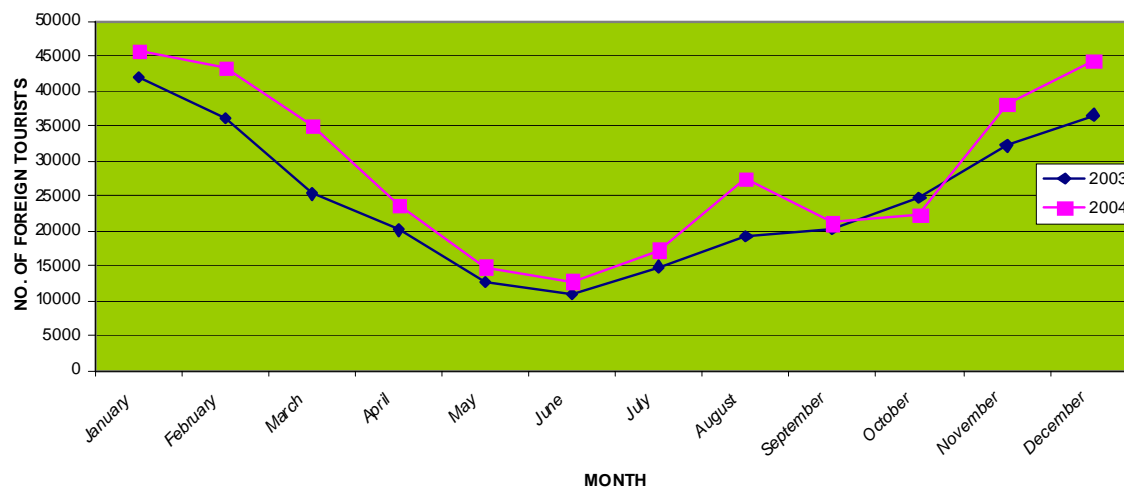


Table –7 shows month-wise arrival of foreign tourists from 2000 to 2004

TABLE No. 7
MONTHWISE ARRIVAL OF FOREIGN TOURISTS - 2000 to 2004

Sl.No	Month	2000	2001	2002	2003	2004
1	January	24388	31625	29440	41845	45630
2	February	23268	30862	29105	36163	43418
3	March	17499	21957	19246	25261	35006
4	April	13964	17868	18028	20106	23546
5	May	12923	10653	10794	12675	14870
6	June	8306	6571	6610	10820	12734
7	July	8514	7747	8581	14824	17228
8	August	17764	13611	14226	19240	27341
9	September	18222	12391	17808	20253	21103
10	October	17344	11913	20744	24702	22160
11	November	22592	19310	26190	32165	38118
12	December	25149	24322	31792	36567	44392
	Total	209933	208830	232564	294621	345546

Month-wise Details of Domestic Tourists

The following Table-8 shows a comparative study of month-wise details pertaining to domestic tourist arrivals in Kerala in 2003 & 2004. In 2003 & 2004, the highest figure was for December and the lowest was for March. Graph – 6 shows the month-wise arrival trend.

TABLE No. 8
MONTHWISE ARRIVAL OF DOMESTIC TOURISTS

Sl.No	Month	2003	2004	% of Variation over the year 2003
1	January	511396	523145	2.30
2	February	427116	451420	5.69
3	March	400503	422727	5.55
4	April	514213	503583	-2.07
5	May	566603	561503	-0.90
6	June	450537	440469	-2.23
7	July	421346	508893	20.78
8	August	469920	489182	4.10
9	September	496977	457398	-7.96
10	October	513082	516386	0.64
11	November	526578	544746	3.45
12	December	572957	552730	-3.53
	Total	5871228	5972182	1.72

GRAPH - 6
MONTHWISE COMPARISON OF DOMESTIC TOURISTS - 2003 to 2004

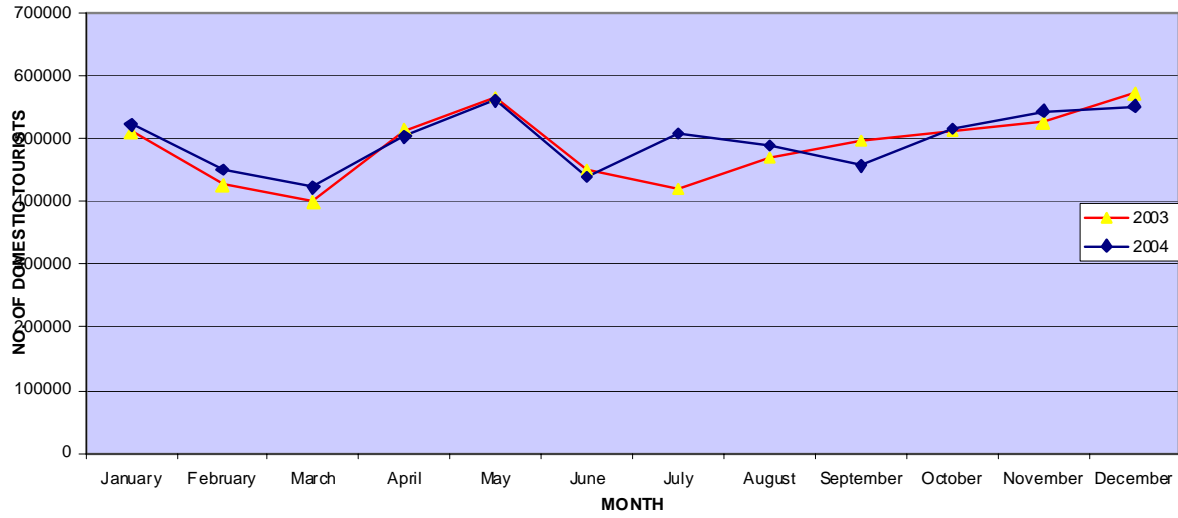


Table -9 shows month-wise arrival of domestic tourists from 2000 to 2004

TABLE NO. 9
MONTHWISE ARRIVAL OF DOMESTIC TOURIST 2000 TO 2004.

Sl.No.	Month.	2000	2001	2002	2003	2004
1	January	454330	472377	471608	511396	523145
2	February	382657	399215	387550	427116	451420
3	March	369231	396320	382452	400503	422727
4	April	453194	498856	499217	514213	503583
5	May	486006	479515	537429	566603	561503
6	June	356260	383196	406500	450537	440469
7	July	361034	396805	406622	421346	508893
8	August	373599	428291	488050	469920	489182
9	September	386123	432608	466928	496977	457398
10	October	435426	427181	472056	513082	516386
11	November	476877	442386	494481	526578	544746
12	December	478484	482942	555363	572957	552730
	Total	5013221	5239692	5568256	5871228	5972182

Arrival through Air & Ship

The following table gives the number of foreign tourists arrived to Kerala through different Airports and Seaports of Kerala.

TABLE No.11
COUNTRYWISE BREAK-UP OF FOREIGN TOURISTS THROUGH AIR & SHIP 2003 & 2004

Sl.No.	NATIONALITY	Air - 2003	Ship - 2003	Air - 2004	Ship - 2004
1	AUSTRALIA	1,431	235	1,717	504
2	AUSTRIA	839	28	1,093	31
3	BAHRAIN	141	0	212	0
4	BANGALADESH	259	0	597	0
5	BELGIUM	304	14	292	16
6	BRAZIL	26	2	47	11
7	CANADA	1,519	333	2,134	939
8	CHINA	37	2	74	11
9	CZECH	63	2	57	1
10	DENMARK	207	4	212	4
11	FRANCE	2,182	23	3,278	23
12	GERMANY	3,894	764	5,578	1,631
13	IRAN	69	0	81	3
14	ISRAEL	138	1	227	12
15	ITALY	1,935	9	2,473	23
16	JAPAN	684	1010	1,032	641
17	KENYA	76	4	52	6
18	KOREA	250	6	275	6
19	KUWAIT	296	0	436	0
20	MALAYSIA	2123	0	1,779	8
21	MALDIVES	14,732	0	23,158	4
22	MEXICO	32	37	20	86
23	NEPAL	88	0	170	0
24	NETHERLANDS	728	27	694	106
25	NEWZEALAND	228	36	268	49
26	OMAN	733	0	670	0
27	PAKISTAN	0	0	1	0
28	PHILLIPPINES	139	5	176	27
29	QATAR	97	0	113	0
30	RUSSIA	138	3	271	27
31	SAUDI ARABIA	409	3	657	0
32	SINGAPORE	2,424	21	3,138	33
33	SOUTH AFRICA	323	12	215	19
34	SPAIN	306	10	372	7
35	SRI LANKA	7,626	6	5,592	19
36	SWEEDEN	539	1	725	4
37	SWITZERLAND	1,364	38	1,739	76
38	THAILAND	54	2	77	6

39	U.A.E	1,014	0	1,278	0
40	U.K	14,789	827	16,704	617
41	U.S.A	15,021	1,249	19,075	2,429
42	YUGOSLAVIA	12	1	9	0
	OTHERS	1,745	66	2,362	134
	Total	79,014	4,781	99,130	7,513

Earnings from Tourism in Kerala.

The following Table –12 shows the estimates of foreign exchange earnings and total earnings from tourism for the last four years. It is to be noted that earnings from tourism shows an increasing trend. In 2004, an increase of 28.82% on the foreign exchange earnings and 15.01% in the total earnings were obtained over the respective figures of 2003.

**TABLE No. – 12
EARNINGS FROM TOURISM**

Year	Foreign Exchange Earnings (Rs. In Cs.)	% Variation over previous year	Total Revenue generated from Tourism (Direct & Indirect)	% Variation over previous year
2001	535.00	1.85	4500	12.50
2002	705.67	31.90	4931	9.58
2003	983.37	39.35	5938	20.42
2004	1266.77	28.82	6829	15.01

APPENDIX – I : MONTHWISE ARRIVALS

MONTH-WISE STATISTICS OF FOREIGN TOURISTS - 2004													
	JAN	FEB	MAR	APR	MAY	JUN	JUL	AUG	SEP	OCT	NOV	DEC	TOTAL
ALAPPUZHA	5,689	5,667	4,115	2,796	1,007	417	1,000	4,203	1,809	2,392	4,313	4,616	38,024
ERNAKULAM	12,875	12,017	12,387	7,715	5,103	4,600	5,725	7,796	6,367	7,666	12,206	14,887	109,344
IDUKKI	7,021	7,726	3,830	3,079	889	595	1,709	4,087	2,975	2,710	6,090	5,320	46,031
KASARAGOD	358	291	190	128	67	123	61	65	47	70	59	340	1,799
KOLLAM	1,278	1,150	911	469	328	206	416	610	440	524	831	1,079	8,242
KANNUR	314	266	170	80	70	433	83	125	332	113	175	355	2,516
KOZHIKODE	417	544	375	321	182	283	478	560	232	268	402	640	4,702
KOTTAYAM	3,366	3,717	2,536	1,453	767	356	612	1,916	1,318	1,606	2,906	2,964	23,517
MALAPPURAM	351	440	295	182	128	189	479	202	163	170	301	229	3,129
PALAKKAD	242	95	26	41	44	238	39	58	20	43	60	41	947
PATHANAMTHITTA	40	53	34	15	21	31	23	11	23	18	39	22	330
THRISSUR	398	359	484	161	219	101	172	205	105	80	196	178	2,658
THIRUVANANTHAPURAM	13,166	10,989	9,584	7,070	6,024	5,105	6,388	7,454	7,250	6,480	10,460	13,588	103,558
WAYANAD	115	104	69	36	21	57	43	49	22	20	80	133	749
TOTAL	45,630	43,418	35,006	23,546	14,870	12,734	17,228	27,341	21,103	22,160	38,118	44,392	345,546
MONTH-WISE STATISTICS OF DOMESTIC TOURISTS - 2004													
	JAN	FEB	MAR	APR	MAY	JUN	JUL	AUG	SEP	OCT	NOV	DEC	TOTAL
ALAPPUZHA	18,958	14,199	13,595	13,742	15,557	13,445	12,073	16,664	14,099	15,626	19,094	18,854	185,906
ERNAKULAM	94,542	78,549	74,814	79,495	90,761	73,960	103,925	77,069	80,688	90,138	99,821	99,717	1,043,479
IDUKKI	42,134	32,629	26,642	38,674	47,174	33,461	42,922	54,422	32,159	39,463	46,386	46,217	482,283
KASARAGOD	13,405	10,808	10,811	11,435	10,660	10,252	9,750	11,396	11,247	11,937	11,582	11,378	134,661
KOLLAM	8,579	7,856	8,439	7,558	7,952	8,245	8,055	8,556	9,065	8,707	8,661	9,056	100,729
KANNUR	26,539	24,256	24,460	27,670	28,977	25,093	26,028	27,336	23,908	28,309	30,349	30,720	323,645
KOZHIKODE	38,207	38,526	37,502	39,810	40,494	38,419	67,681	38,101	39,395	39,966	39,180	41,650	498,931
KOTTAYAM	15,490	11,989	10,261	11,854	15,025	11,526	11,370	12,429	11,865	14,040	18,249	18,986	163,084
MALAPPURAM	26,554	22,072	24,039	23,834	25,448	24,208	24,564	26,309	25,059	24,654	24,572	25,890	297,203
PALAKKAD	20,676	21,241	20,354	23,245	26,839	20,967	18,334	20,013	19,182	21,652	21,307	22,205	256,015
PATHANAMTHITTA	5,805	4,688	4,576	5,693	5,550	5,003	5,101	4,604	4,441	6,131	6,793	6,255	64,640
THRISSUR	119,707	102,259	91,089	137,659	154,866	95,261	94,356	109,273	99,684	123,758	124,897	125,309	1,378,118
THIRUVANANTHAPURAM	76,792	67,043	61,985	68,165	75,882	68,152	70,963	69,417	72,593	72,608	74,644	77,543	855,787
WAYANAD	15,757	15,305	14,160	14,749	16,318	12,477	13,771	13,593	14,013	19,397	19,211	18,950	187,701
TOTAL	523,145	451,420	422,727	503,583	561,503	440,469	508,893	489,182	457,398	516,386	544,746	552,730	5,972,182

APPENDIX II : NATIONALITY WISE ARRIVALS

NATIONALITY WISE STATISTICS OF FOREIGN AND DOMESTIC TOURISTS - 2004

NATIONALITY	ALAPUZHA	ERNAKULAM	IDUKKI	KASARAGOD	KOLLAM	KANNUR	KOZHIKODE	KOTTAYAM	MALAPPURAM	PALAKKAD	PATHNAM THITTA	THRISSUR	THIRUVANANTHA PURAM	WAYANAD	TOTAL
AUSTRALIA	826	3,319	2,139	56	339	121	211	662	23	17	25	67	2,424	42	10,271
AUSTRIA	352	996	803	17	108	142	115	249	6	0	1	23	879	5	3,696
BAHRAIN	25	471	85	0	6	46	32	19	14	2	0	8	243	0	951
BANGLADESH	159	311	57	0	4	280	31	29	28	195	0	2	281	0	1,377
BELGIUM	573	1,527	838	31	146	60	70	761	65	14	6	26	746	20	4,883
BRAZIL	30	246	75	1	1	7	2	31	2	0	3	0	126	0	524
CANADA	498	2,150	1,059	45	293	70	140	490	49	19	11	84	1,820	53	6,781
CHINA	11	432	159	0	19	8	6	54	2	13	0	14	205	4	927
CZECHOSLOVAKIA	177	119	56	9	17	10	13	19	1	1	1	4	99	1	527
DENMARK	272	904	567	49	253	33	41	120	13	8	2	39	803	4	3,108
FRANCE	3,866	12,339	9,290	312	914	226	489	4,288	742	194	47	320	4,671	41	37,739
GERMANY	2,641	7,242	4,652	112	835	195	228	1,694	178	43	17	328	7,091	48	25,304
IRAN	65	95	16	0	36	6	15	9	4	1	0	1	113	2	363
ISRAEL	299	3,733	981	69	132	21	73	278	8	0	4	4	710	12	6,324
ITALY	1,069	3,601	2,485	58	297	69	83	1,315	83	9	2	93	3,499	25	12,688
JAPAN	375	2,378	308	19	342	33	49	244	18	81	0	12	3,731	8	7,598
KENYA	86	153	40	0	0	2	5	11	24	0	0	2	153	0	476
KOREA	448	789	55	0	99	1	32	27	4	7	1	0	480	2	1,945
KUWAIT	30	994	27	0	0	10	75	34	66	1	0	0	668	0	1,905
MALAYSIA	78	1,216	83	2	8	41	64	76	51	35	0	63	730	3	2,450
MALDIVES	26	874	1	2	29	3	6	2	0	0	0	3	24,917	0	25,863
MEXICO	33	147	24	0	25	6	16	17	0	2	0	0	161	1	432
NEPAL	37	101	21	3	4	1	7	15	0	3	0	0	750	0	942
NETHERLANDS	909	3,829	1,448	36	228	229	177	342	15	14	5	71	2,351	11	9,665
NEWZEALAND	92	735	283	18	143	21	46	37	9	14	1	11	452	5	1,867
OMAN	30	583	37	28	6	4	203	46	141	0	0	364	232	10	1,684
PAKISTAN	6	37	0	0	1	0	0	2	0	0	0	0	19	1	66
PHILLIPPINES	46	209	11	1	1	2	11	4	3	1	0	7	351	0	647
QATAR	25	597	15	0	0	3	89	2	17	0	0	2	37	0	787
RUSSIA	155	618	187	9	17	19	13	98	0	0	0	12	856	3	1,987
SAUDI ARABIA	151	3,109	157	1	2	14	157	96	176	16	2	3	205	2	4,091
SINGAPORE	108	1,899	205	2	63	6	25	146	15	2	4	43	940	2	3,460
SOUTH AFRICA	324	2,119	142	4	25	17	85	275	7	2	0	10	707	3	3,720
SPAIN	330	2,123	1,392	21	339	50	58	1,340	37	2	13	34	1,111	3	6,853

SRI LANKA	80	1,231	106	3	99	27	158	119	104	25	2	115	4,945	0	7,014
SWEEDEN	353	1,729	956	61	240	36	112	314	35	3	5	49	1,716	62	5,671
SWITZERLAND	1,082	2,548	1,886	58	261	41	107	978	33	8	4	80	2,590	39	9,715
THAILAND	120	141	48	28	8	45	13	8	11	0	1	4	232	0	659
U.A.E	64	1,564	376	45	3	57	452	191	341	2	1	41	267	47	3,451
U.K	6,457	18,061	9,706	251	2,031	265	573	4,741	491	58	62	295	18,578	115	61,684
U.S.A	2,576	11,517	3,593	144	544	183	398	2,327	150	126	96	340	7,065	129	29,188
YUGOSLAVIA	29	69	34	0	4	3	1	0	0	0	0	6	896	1	1,043
OTHERS	13,111	12,489	1,628	304	320	103	221	2,007	163	29	14	78	4,708	45	35,220
TOTAL FOREIGNERS	38,024	109,344	46,031	1,799	8,242	2,516	4,702	23,517	3,129	947	330	2,658	103,558	749	345,546
TOTAL DOMESTICS	185,906	1,043,479	482,283	134,661	100,729	323,645	498,931	163,084	297,203	256,015	64,640	1,378,118	855,787	187,701	5,972,182